

OIL



PERIOD	OPEN	DATE HIGH	HIGH	LOW	DATE LOW	RANGE	CLOSE	CHANGE	% CHANGE
Daily	58.65	09/12	58.96	58.00	09/12	0.960	58.14	-0.51	-0.87%
Weekly	59.92	08/12	60.07	58.00	09/12	2.07	58.14	-1.78	-2.97%
Monthly	58.79	05/12	60.22	58.00	09/12	2.22	58.14	-0.65	-1.11%

PIVOT POINTS		58.37	TIMEFRAME	TREND	TRADE RECOMMENDATION	
	R3	59.69				
Resistance	R2	59.33	WEEKLY	↓	Entry Price	58.64
	R1	58.73			SL	59.39
	S1	57.77			TP	57.14
Support	S2	57.41				
		S3	56.81	1 HOURS	↓	

DAILY FUNDAMENTAL

WTI crude oil remains under pressure as global concerns over slowing global economic growth dampen energy demand expectations, while supply remains relatively ample thanks to stable exports from major economies and easing geopolitical tensions. A weaker US dollar has provided some support for prices, but the effect is limited due to oversupply sentiment and a lack of geopolitical catalysts. Today's outlook is bearish-sideways.

GOLD



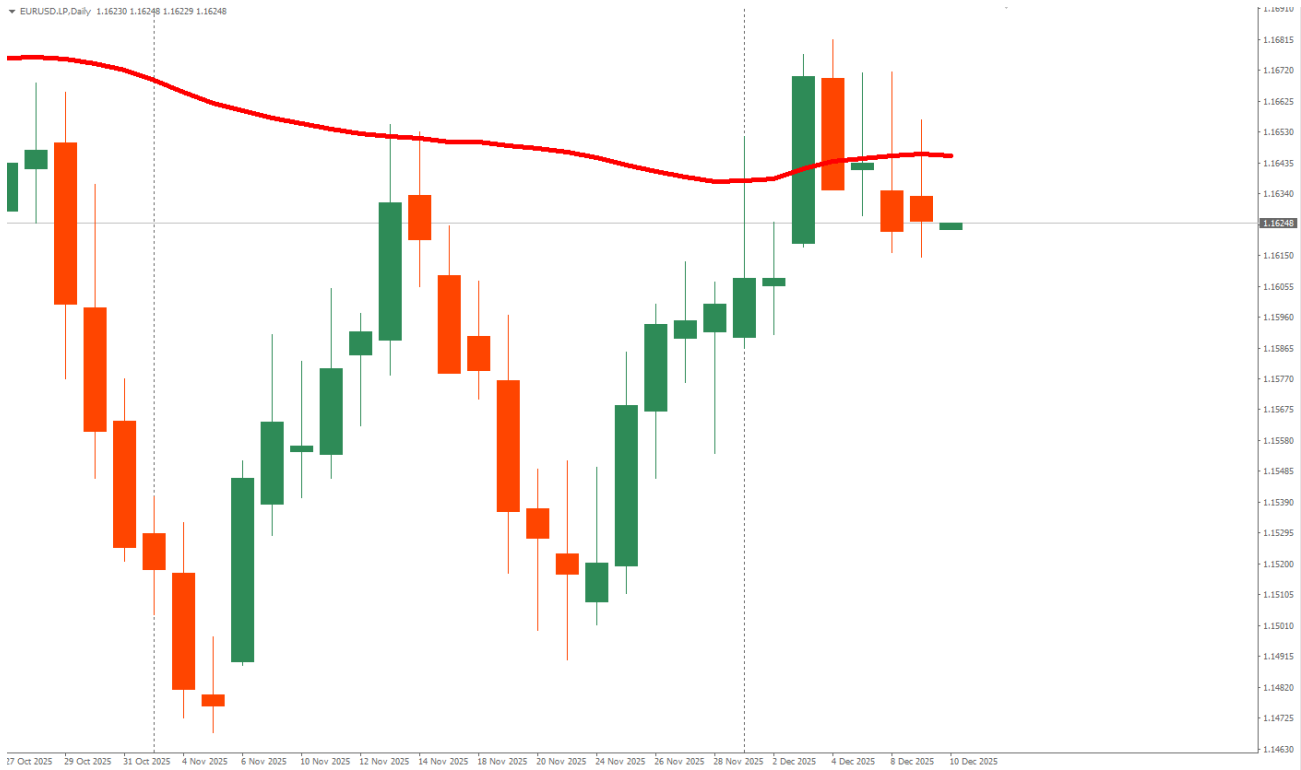
PERIOD	OPEN	DATE HIGH	HIGH	LOW	DATE LOW	RANGE	CLOSE	CHANGE	% CHANGE
Daily	4190.06	09/12	4221.06	4169.84	09/12	51.22	4207.88	17.82	0.43%
Weekly	4197.30	09/12	4221.06	4169.84	09/12	51.22	4207.88	10.58	0.25%
Monthly	4222.13	01/12	4264.34	4163.35	02/12	100.99	4207.88	-14.25	-0.34%

PIVOT POINTS		4199.59	TIMEFRAME	TREND	TRADE RECOMMENDATION	
Resistance	R3	4280.57			WEEKLY	↑
	R2	4250.81	SL	4188.88		
	R1	4229.35	TP	4225.88		
Support	S1	4178.13			DAILY	↑
	S2	4148.37	4 HOURS	↑		
S3	4126.91	1 HOURS			↑	

DAILY FUNDAMENTAL

Gold received moderate support from a weaker US dollar and expectations that the Federal Reserve (The Fed) may cut interest rates soon, lowering US bond yields and increasing the appeal of non-yielding assets like gold. With global geopolitical stability relatively stable and safe-haven demand less aggressive, the bias for XAUUSD is moderately bullish.

EURUSD



PERIOD	OPEN	DATE HIGH	HIGH	LOW	DATE LOW	RANGE	CLOSE	CHANGE	% CHANGE
Daily	1.16332	09/12	1.16566	1.16144	09/12	0.00422	1.16256	-0.00076	-0.07%
Weekly	1.16349	08/12	1.16714	1.16144	09/12	0.00570	1.16256	-0.00093	-0.08%
Monthly	1.15899	04/12	1.16813	1.15864	01/12	0.00949	1.16256	0.00357	0.31%

PIVOT POINTS		1.16322	TIMEFRAME	TREND	TRADE RECOMMENDATION	
	R3	1.16922			WEEKLY	
Resistance	R2	1.16744	SL	1.16461		
	R1	1.16500	DAILY	TP		
	S1	1.16078			4 HOURS	
Support	S2	1.15900	1 HOURS			
	S3	1.15656				

DAILY FUNDAMENTAL

EURUSD has the potential to strengthen as the USD weakens due to increasing dovish speculation regarding the Fed's policy, while stable European and global geopolitical conditions help maintain positive sentiment towards the euro.

GBPUSD



PERIOD	OPEN	DATE HIGH	HIGH	LOW	DATE LOW	RANGE	CLOSE	CHANGE	% CHANGE
Daily	1.33156	09/12	1.33549	1.32858	09/12	0.00691	1.32963	-0.00193	-0.14%
Weekly	1.33166	09/12	1.33549	1.32858	09/12	0.00691	1.32963	-0.00203	-0.15%
Monthly	1.32230	04/12	1.33836	1.31783	02/12	0.02053	1.32963	0.00733	0.55%

PIVOT POINTS		1.33123	TIMEFRAME	TREND	TRADE RECOMMENDATION	
	R3	1.34080				
Resistance	R2	1.33814	WEEKLY	↑	Entry Price	1.32973
	R1	1.33389			SL	1.33223
Support	S1	1.32698			DAILY	↓
	S2	1.32432	4 HOURS	↑		
	S3	1.32007	1 HOURS	↓		

DAILY FUNDAMENTAL

GBP/USD shows potential for mild appreciation due to a weakening US dollar and improving global risk sentiment, giving the pound room to rise.

USDJPY



PERIOD	OPEN	DATE HIGH	HIGH	LOW	DATE LOW	RANGE	CLOSE	CHANGE	% CHANGE
Daily	155.853	09/12	156.942	155.729	09/12	1.213	156.877	1.024	0.66%
Weekly	155.119	09/12	156.942	154.889	08/12	2.053	156.877	1.758	1.13%
Monthly	156.072	09/12	156.942	154.331	05/12	2.611	156.877	0.805	0.52%

PIVOT POINTS		156.516	TIMEFRAME	TREND	TRADE RECOMMENDATION	
	R3	158.516				
Resistance	R2	157.729	WEEKLY	↑	Entry Price	156.867
	R1	157.303			SL	156.717
Support	S1	156.090			DAILY	↑
	S2	155.303	4 HOURS	↑		
	S3	154.877	1 HOURS	↑		

DAILY FUNDAMENTAL

USD/JPY is trending lower as the USD comes under pressure from expectations of a Fed rate cut, while the Yen is strengthening slightly as a mild safe-haven in cautious global market conditions — although the BoJ's dovish policy is limiting major gains.



ECONOMIC CALENDAR

TIME	CURRENCY	PRIORITY	EVENTS	FORECAST	PREVIOUS
01:01	USD	Low	10-y Bond Auction		4.07 2.4
03:45	NZD	Med	RBNZ Gov Breman Speaks		
04:30	USD	Low	API Weekly Statistical Bulletin		
04:48	NZD	Low	Visitor Arrivals m/m		3%
06:10	USD	Med	President Trump Speaks		
06:50	JPY	Low	PPI y/y	0.027	2.70%
08:30	CNY	Med	CPI y/y	0.007	0.20%
08:30	CNY	Med	PPI y/y	-0.02	-2.10%
16:00	EUR	Low	Italian Industrial Production m/m	-0.003	2.80%
Tentative	GBP	Low	10-y Bond Auction		4.61 2.8
17:55	EUR	Med	ECB President Lagarde Speaks		
20:30	USD	High	Employment Cost Index q/q	0.009	0.90%
21:45	CAD	High	BOC Rate Statement		
21:45	CAD	High	Overnight Rate	0.0225	2.25%
22:30	CAD	High	BOC Press Conference		
22:30	USD	Low	Crude Oil Inventories	-1.2M	0.6M

DISCLAIMER

Any review, news, research, analysis, price, or other information contained in this report is provided as general market commentary and does not constitute trading advice. It is subject to change over time. Trading in Financial and Currency Markets on margin carries a high level of risk and may not be suitable for all investors. The high degree of leverage can work both against you and in your favor. Before entering the financial and currency markets, you should carefully consider your trading objectives, level of experience, and risk tolerance. There is a possibility that you may suffer a loss of some or all of your initial investment. Therefore, you should not trade with money you cannot afford to lose. You should be fully aware of all the risks associated with trading in the Money Market and Foreign Exchange. If you are in doubt, you should seek advice from an independent financial advisor.